



# GMT MONTHLY MEMBERSHIP PROGRESS REPORT

Results as of: 6/30/2017

Multiple District 325

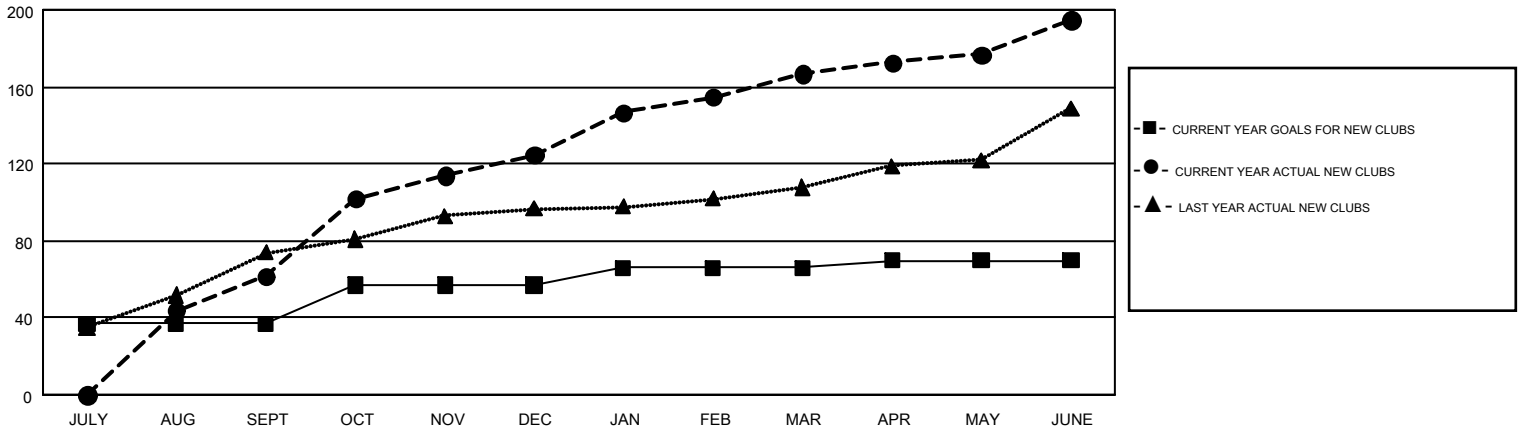
LOCATION: NEPAL

GMT: OPEN

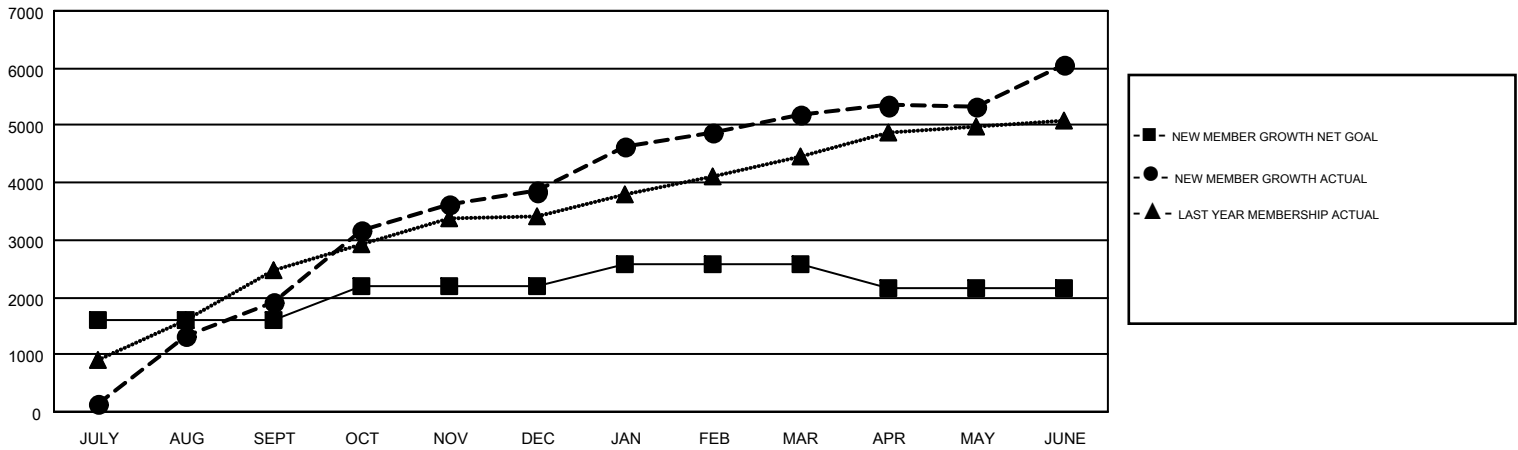
GMT CA 6

| Clubs                 |               |           |               | Members               |  |  |  |
|-----------------------|---------------|-----------|---------------|-----------------------|--|--|--|
| RESULTS FOR 2016-2017 |               |           |               | RESULTS FOR 2016-2017 |  |  |  |
| QUARTER               | NEW CLUB GOAL | NEW CLUBS | DROPPED CLUBS | QUARTER               | NEW MEMBER GROWTH NET GOAL (not reinstated or transfers) | NEW MEMBER GROWTH ACTUAL (not reinstated or transfers) | DROPPED MEMBERS ACTUAL (including transfers) |
| JULY/AUG/SEPT         | 37            | 62        | 1             | JULY/AUG/SEPT         | 1,587  | 2,593  | 664  |
| OCT/NOV/DEC           | 20            | 63        | 3             | OCT/NOV/DEC           | 617  | 2,620  | 700  |
| JAN/FEB/MAR           | 9             | 42        | 2             | JAN/FEB/MAR           | 365  | 1,825  | 495  |
| APR/MAY/JUNE          | 4             | 28        | 14            | APR/MAY/JUNE          | -423   | 2,246  | 1,354  |

GOALS AND ACTUAL NEW CLUBS CUMULATIVE



GOALS AND ACTUAL MEMBERS CUMULATIVE



|                        |   |                                 |                 |
|------------------------|---|---------------------------------|-----------------|
| DROPPED CLUBS: 20      | 739 CLUBS OF 905 ADDED 1 OR MORE NEW MEMBERS              | <u>GENDER DISTRIBUTION</u>      |                 |
| <u>DROPPED MEMBERS</u> |   | MALE                            | 20,060 (76.87%) |
| DECEASED               | <a href="#">CLICK HERE FOR CUMULATIVE MEMBERSHIP DATA</a> | FEMALE                          | 6,035 (23.13%)  |
| CLUB CANCELLED         |   | TOTAL FAMILY UNIT MEMBERS       | 13,630          |
| OTHER                  |   | FAMILY MEMBERS PAYING HALF DUES | 8,341           |
| TOTAL                  |   |                                 |                 |